



WILKINSBURG HISTORIC TRAIN STATION

901 Hay St. Wilkinsburg, PA

WCDC
Wilkinsburg Community
Development Corporation

Schedule a building tour
412.727.7855
info@wilkinsburgcdc.org

WILKINSBURG TRAIN STATION

A landmark reborn at the center of opportunity.



Centrally located and fully renovated, the historic Wilkinsburg Train Station offers a rare, one-of-a-kind opportunity to establish a presence at the crossroads of Wilkinsburg and Pittsburgh's East End. With approximately 4,068 square feet of ground-floor retail space, the Station provides a generous, flexible footprint ideally suited for a destination restaurant, café, or innovative retail or commercial use.

Strategically positioned near the Regent Square neighborhood, East Liberty's growing AI Corridor, the Martin Luther King Jr. East Busway, and the dynamic Penn Avenue corridor—traveled by more than 50,000 vehicles daily—the Station is uniquely situated to attract both local residents and a steady flow of commuters.

Originally opened in 1916, the Wilkinsburg Train Station served for generations as the front door to the borough. After decades of vacancy, the building was brought back to life in 2021 following a successful \$7.5 million fundraising campaign that supported a comprehensive historic restoration and modern renovation. Today, the Station stands as a powerful symbol of Wilkinsburg's renewal.

As Wilkinsburg experiences renewed momentum and investment, driven by strong partnerships among local government, nonprofit organizations, businesses, and residents, the Wilkinsburg Community Development Corporation seeks a tenant that will honor the Station's historic legacy while contributing to the borough's vibrant, forward-looking future.

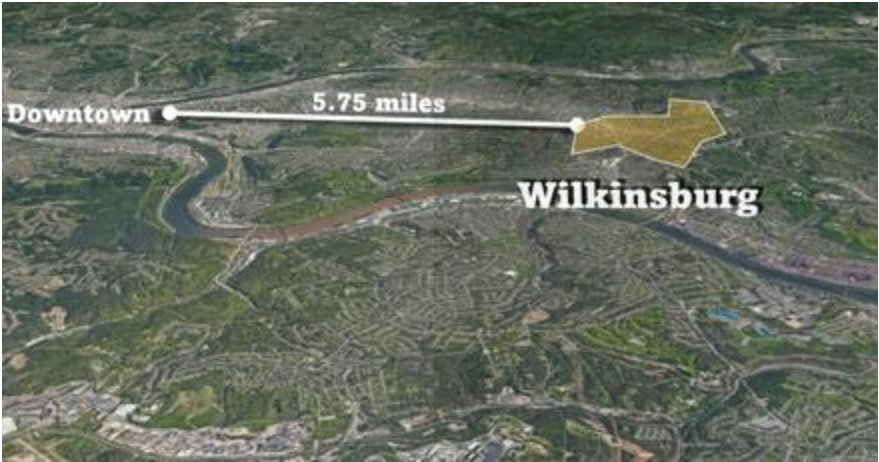
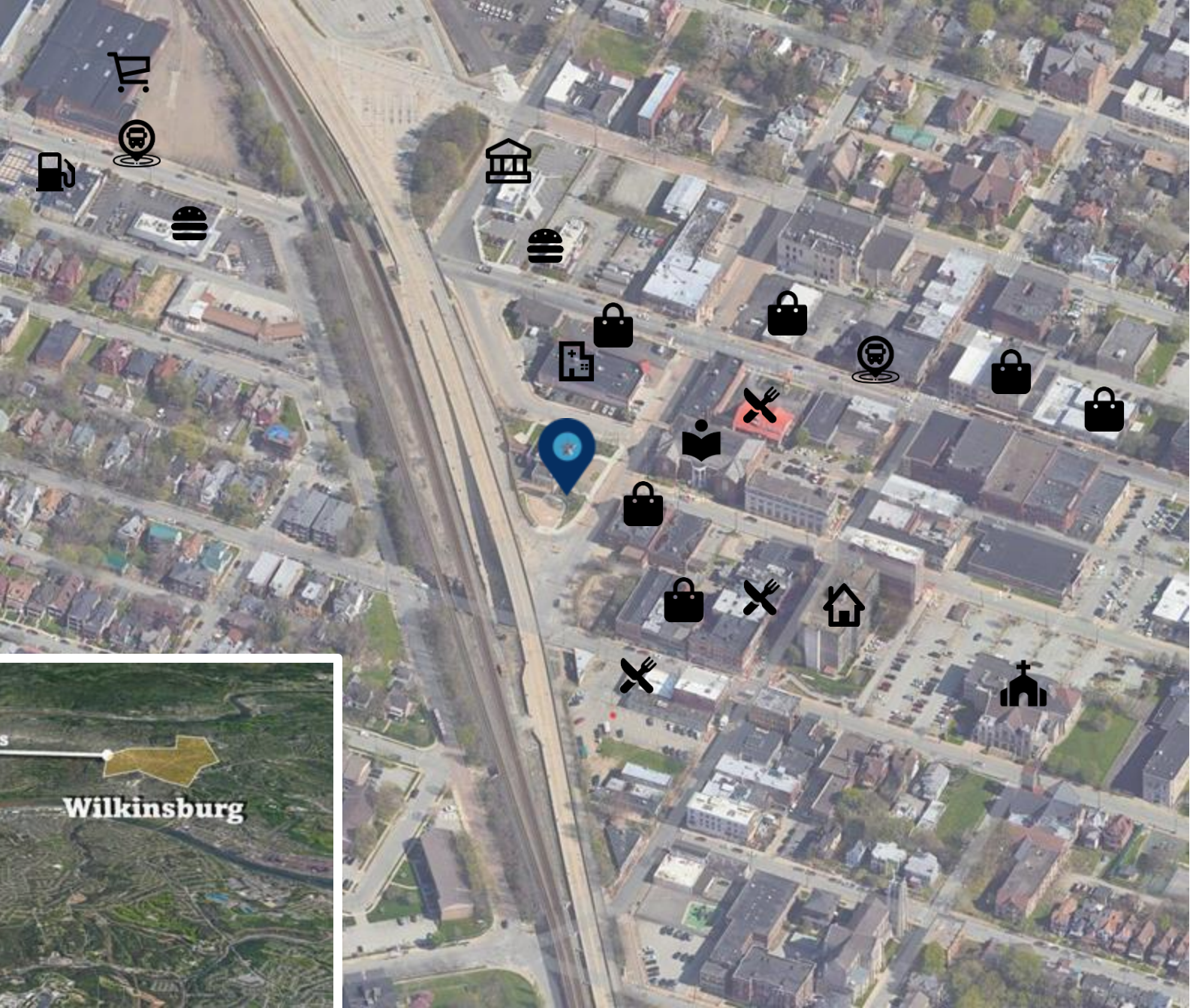
DEMOGRAPHICS

POPULATION	14,349
BUSINESSES	989
MEDIAN INCOME	\$50,193.60

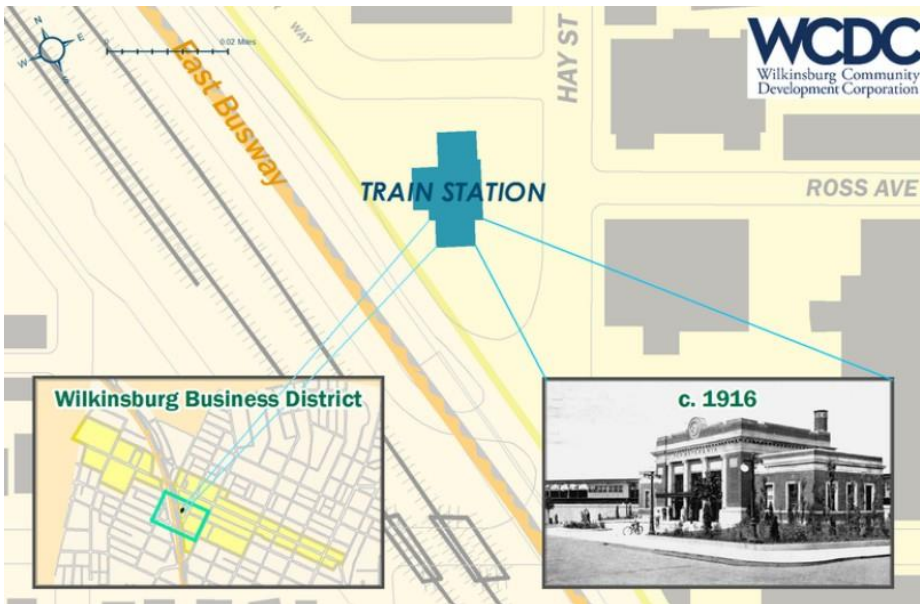


SITE CONTEXT

-  SITE LOCATION
-  LIBRARY
-  RESTAURANT
-  GROCERY
-  RETAIL
-  GAS
-  TRANSIT
-  BANK
-  FAST FOOD
-  MULTI FAMILY
-  CHURCH
-  HEALTHCARE



Location



LOCATION HIGHLIGHTS:

- Accessible location along the East Busway, adjacent to Penn Avenue
- 7.5 miles from Pittsburgh CBD
- 4.7 miles from Oakland
- 1.1 miles from I-376

TRAIN STATION





RESTAURANT DESIGN OPTION 1



RESTAURANT DESIGN OPTION 2



RESTAURANT DESIGN - ALTERNATES

ALTERNATE RESTAURANT PLANS

TEST FIT OPTION THREE – BAR/DINING MAIN FLOOR

WILDMAN CHALMERS DESIGN

WWW.WILDMANCHALMERS.COM
 800 LOVING ST PITTSBURGH PA 15221
 PHONE 412.436.9303

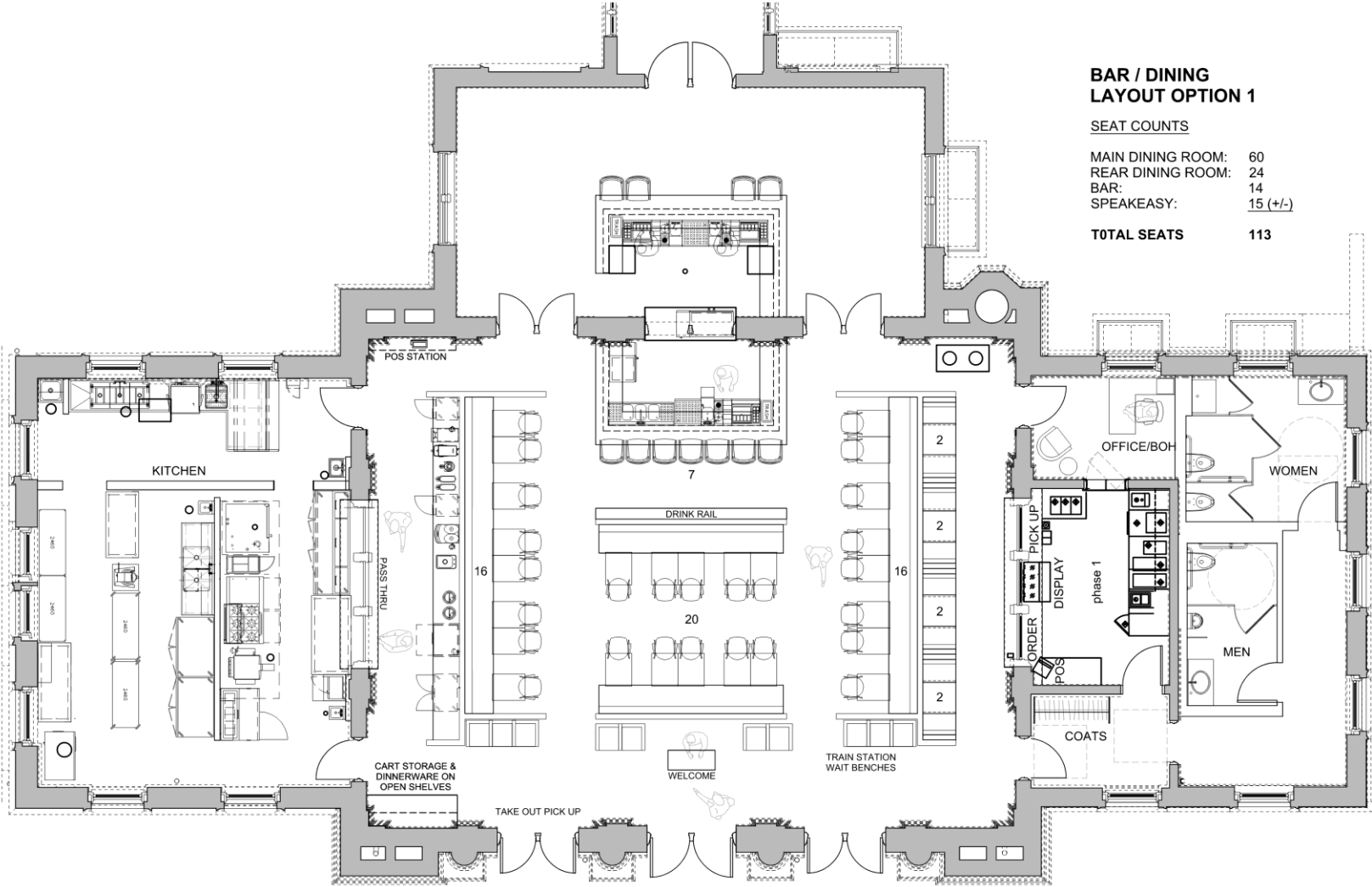
DRAWN CC
 DATE 07/03/21
 CHECKED CC
 PROJECT NO. 190710

© COPYRIGHT 2021. ANY UNAUTHORIZED USE OF THESE DOCUMENTS IS PROHIBITED WITHOUT THE WRITTEN CONSENT OF WILDMAN CHALMERS DESIGN LLC

ISSUE FOR BID 08/31/21

WILKENSBURG TRAIN STATION
 901 HAY STREET
 WILKENSBURG PA 15221

FLOOR PLANS
A1.1



BAR / DINING LAYOUT OPTION 1

SEAT COUNTS

MAIN DINING ROOM:	60
REAR DINING ROOM:	24
BAR:	14
SPEAKEASY:	15 (+/-)
TOTAL SEATS	113

OUTDOOR SEATING

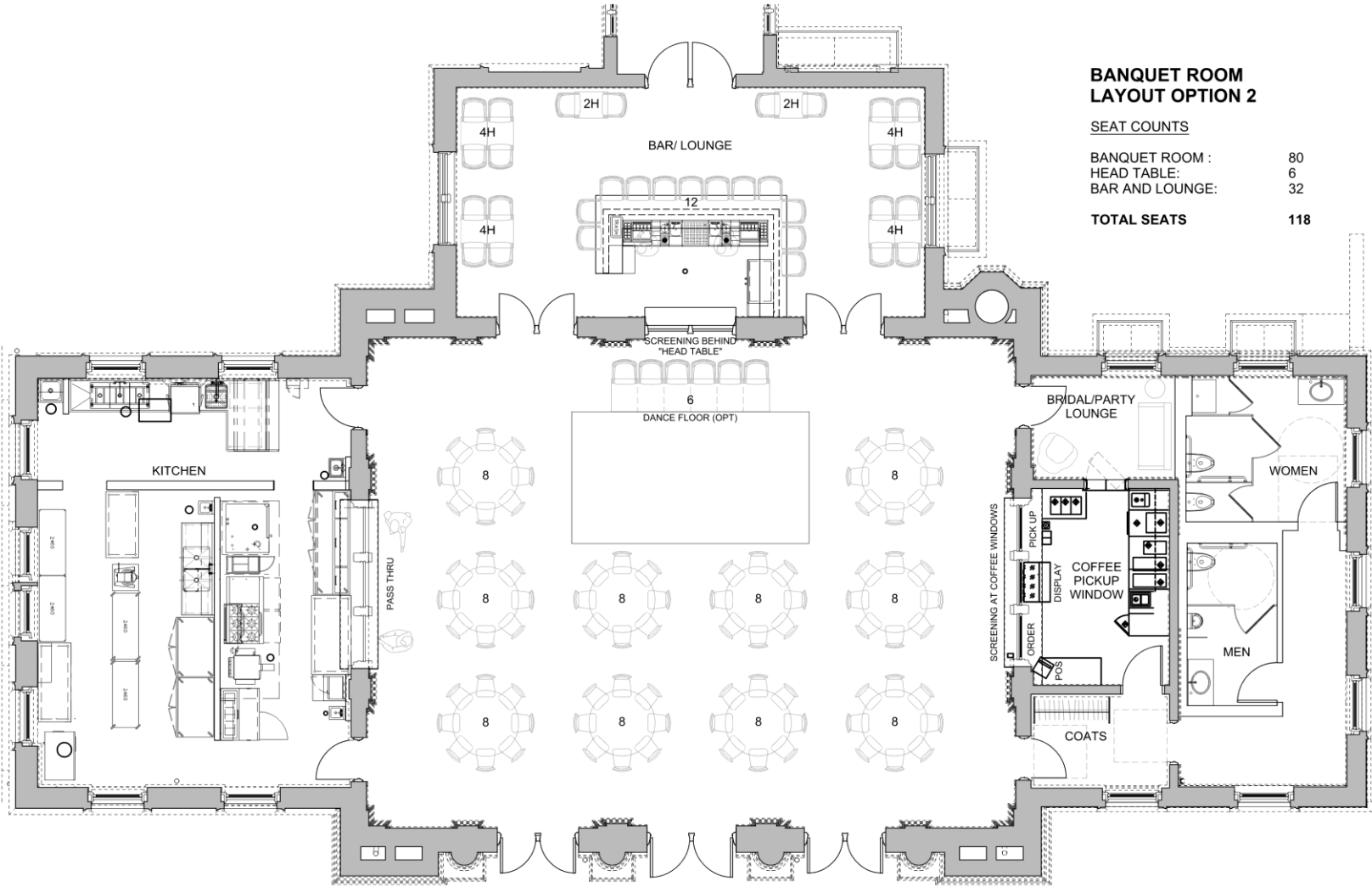




RESTAURANT DESIGN - BANQUET DINING

BANQUET DINING PLANS

TEST FIT OPTION SEVEN – BANQUET ROOM OPT. 2



**BANQUET ROOM
LAYOUT OPTION 2**

SEAT COUNTS

BANQUET ROOM :	80
HEAD TABLE:	6
BAR AND LOUNGE:	32
TOTAL SEATS	118

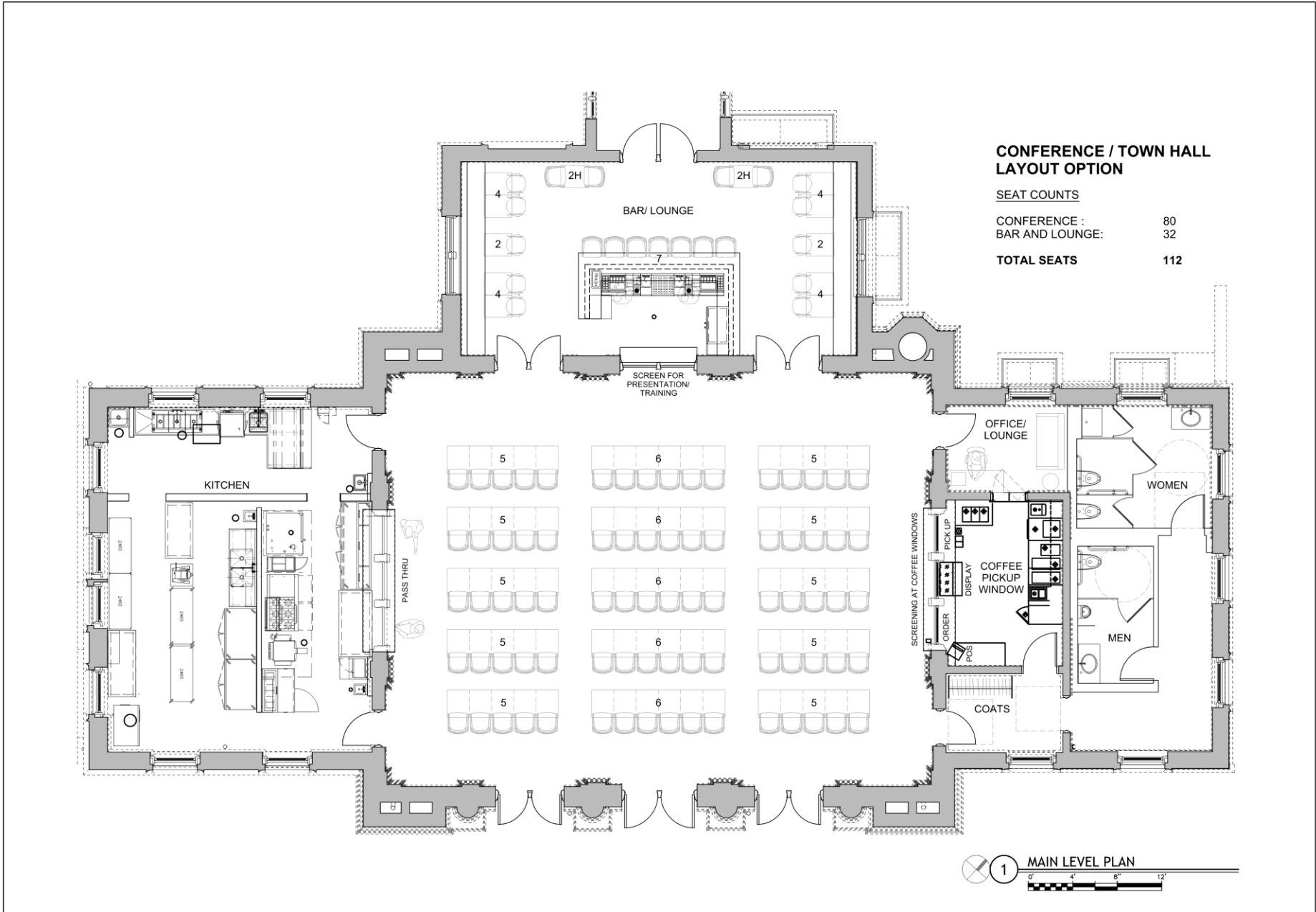
DRAWN	CC
DATE	07/03/21
CHECKED	CC
PROJECT NO.	190710
© COPYRIGHT 2021. ANY UNAUTHORIZED USE OF THESE DOCUMENTS IS PROHIBITED WITHOUT THE WRITTEN CONSENT OF WILDMAN CHALMERS DESIGN LLC	
ISSUE FOR BD	08/31/21



WILKINSBURG 901 HAY STREET
TRAIN STATION WILKINSBURG PA 15221

BANQUET DINING PLANS

TEST FIT OPTION NINE – BANQUET ROOM OPT. 4



CONFERENCE / TOWN HALL LAYOUT OPTION

SEAT COUNTS

CONFERENCE :	80
BAR AND LOUNGE:	32
TOTAL SEATS	112

DRAWN	CC
DATE	07/03/21
CHECKED	CC
PROJECT NO.	190710
© COPYRIGHT 2021. ANY UNAUTHORIZED USE OF THESE DOCUMENTS IS PROHIBITED WITHOUT THE WRITTEN CONSENT OF WILDMAN CHALMERS DESIGN LLC	
ISSUE FOR	NO. / DATE

WILKINSBURG 901 HAY STREET
TRAIN STATION WILKINSBURG PA 15221



THANK YOU,



**Contact us to schedule a site visit and
building tour:
412.727.7855
info@wilkinsburgcdc.org**